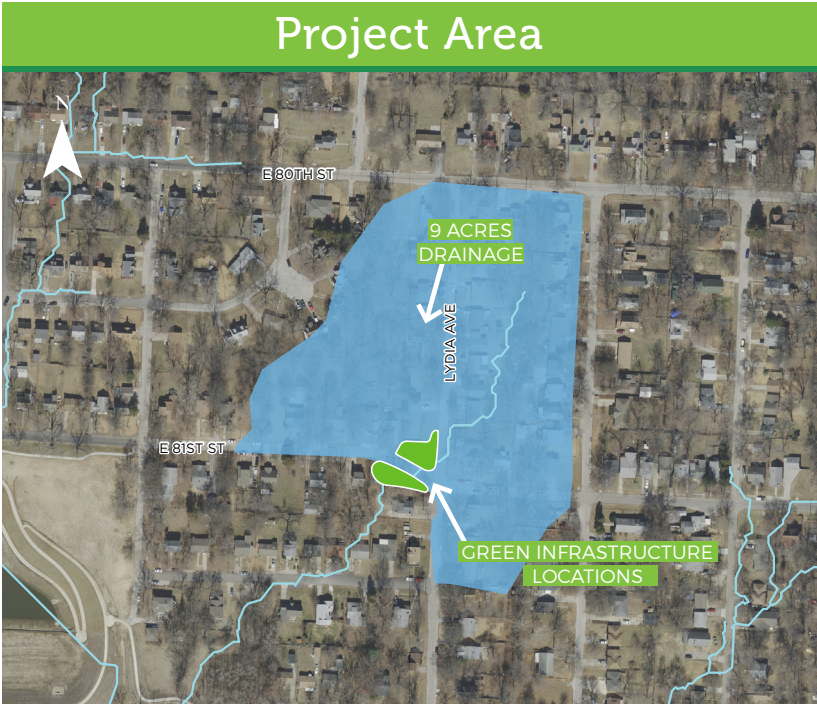




Explore & Discover

# TARGET GREEN MARLBOROUGH: 81ST & LYDIA

Green infrastructure helps our community manage stormwater the way nature intended by capturing and utilizing rainwater where it falls. This project absorbs and filters stormwater from approximately 9 acres in the Middle Blue River Watershed Basin. It also replenishes groundwater and sustains plants, trees, and natural habitats while working with gray infrastructure to increase the capacity of our underground pipes. What isn't absorbed overflows into the Blue River.



### Project Snapshot

- Details:** Bioretention basins help manage stormwater at the intersection while also adding green space to the neighborhood.
- Cost:** Construction was completed in 2017 for approximately \$471,460.
- Background:** Before this was constructed, the intersection regularly experienced ponding water when it rained.



# WHAT DOES THIS SITE DO?

## GREEN INFRASTRUCTURE

decreases the amount of water getting into our pipes, improves water quality, and reduces flooding, pollution, and trash in our streams, rivers, and lakes. The Target Green Marlborough 81st & Lydia green infrastructure project includes:

- **Bioretention basins** at the low point of this intersection are filled with plants to help absorb excess stormwater from rooftops, sidewalks, and streets. Layers of rock and soil store the water. A buried underdrain system drains the excess water, controlling the slow release of water back to the sewer system.
- Before this was constructed, the intersection regularly experienced ponding water when it rained. Rainfall runoff is collected in the bioretention basins, and also through pipes that bring water to the basins under the intersection.

