



Explore & Discover

TARGET GREEN MARLBOROUGH: ARLETA PARK

Green infrastructure helps our community manage stormwater the way nature intended by capturing and utilizing rainwater where it falls. This project absorbs and filters 360,000 gallons of stormwater from approximately 100 acres in the Middle Blue River Watershed Basin. It also replenishes groundwater and sustains plants, trees, and natural habitats while working with gray infrastructure to increase the capacity of our underground pipes. What isn't absorbed overflows into the Blue River.

Project Area



Project Snapshot

- Details:** Rain gardens, bioretention basins, pervious pavers and pavement, traffic-calming curb bump-out beds, new sidewalks.
- Cost:** Construction was completed in 2012 for approximately \$10,300,000.
- Background:** This was a pilot project designed to test natural solutions and determine which would be most effective for Kansas City.
- Noteworthy:** This project was awarded Envision™ Platinum rating for its environmental, social, and economic impacts on the community.



WHAT DOES THIS SITE DO?

GREEN INFRASTRUCTURE

decreases the amount of water getting into our pipes, improves water quality, and reduces flooding, pollution, and trash in our streams, rivers, and lakes. The Target Green Marlborough Arleta Park green infrastructure project includes:

Bioswale capture stormwater runoff by collecting water through the joints between pavers. The water moves through layers of gravel below the pavers and then soaks into the ground. Excess water is sometimes carried away through a perforated pipe and slowly released back to the sewer system.

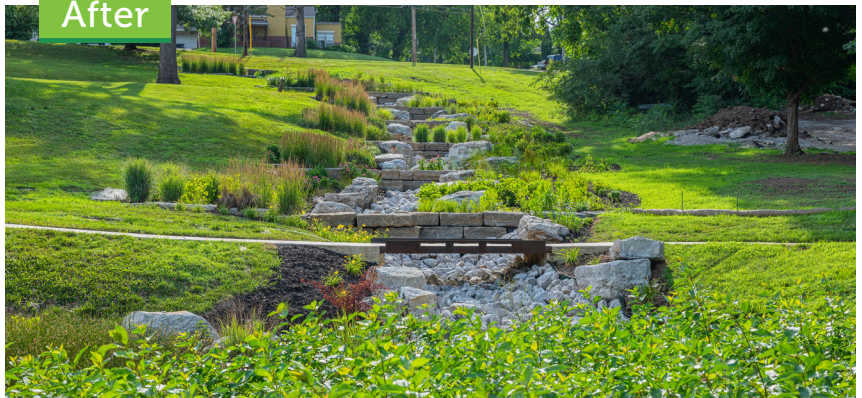
The bioswale moves stormwater runoff downhill from Brooklyn Avenue and into Arleta Park. This runoff is collected, absorbed and filtered through a series of three **bioretention basins** that extend to Prospect Avenue. These basins are filled with plants to help absorb excess stormwater from rooftops, sidewalks, and streets.

Trails built between the bioretention basins help crews access for maintenance, and provide the neighborhood with a walking path through the park.

Before



After



Year 1



Year 2

